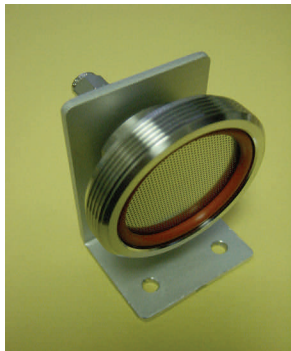


Gas Line Stainless Steel Filter Holder

Product Description

ARI's gas line stainless steel filter holder can be used with pre-filters to prolong a membrane filter's life by trapping particles which can clog membrane pores. It can be used with flow in either direction as long as the pre-filter is loaded upstream. The filter comes with both 3/8" hose barb fittings and 1/8" Swagelok fittings.



Outlet body with support screen and o-ring

Features

- Easy to mount
- High operating pressure
- Easy to change filters
- Optional filter materials for process compatibility



Locking ring and inlet body

"Stainless steel gas filter with easy-to-change media filters"



Assembled filter with 1/8" Swagelok fittings



Specifications

Dimensions	4 1/2" L 2 5/8" W 3" H
Connections	1/4" NPTF, comes with hose barb fitting (2) and 1/8" SS Swagelok fitting (2)
Material	
Body, Support	304 Stainless Steel
Screens, Locking Ring	304 Stainless Steel
Gasket	PTFE
O-ring	Silicone
Membrane Filter Size	47 mm
Filtration Area	12.5 cm ²
Pore size	1.0 micron
Pressure	
Inlet	100 psi
Differential	50 psi
Max Temp	200C

7632 Washington Avenue South
Eden Prairie, MN 55344
USA

Phone: 952-941-6500
Fax: 952-941-6518
Email: rrr@atmrcv.com
Web: www.atmrcv.com



ATMOSPHERE RECOVERY, INC.
Precision Management of Process Gases