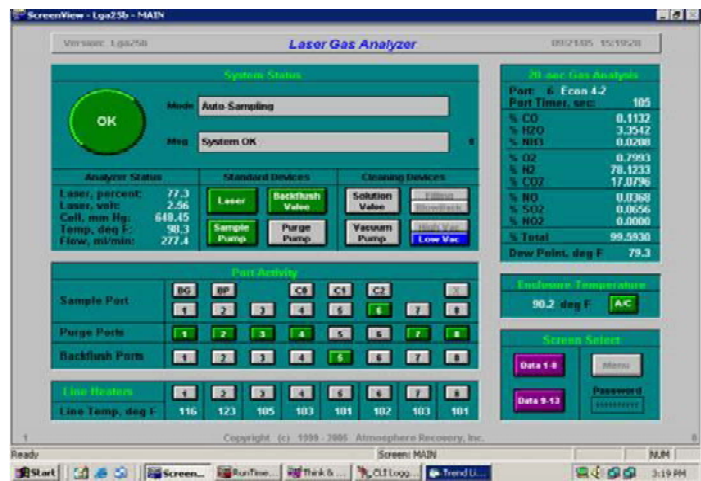


Laser Gas Analysis for Power Plant Combustion Monitoring and Control

System Description

Atmosphere Recovery, Inc. (ARI) is pleased to introduce the first and only combustion monitoring and control system that allows coal-fired and multi-fuel power plants to optimize burner air-fuel ratio in real-time. The system combines ARI's rugged 9-gas Laser Gas Analyzer (LGA) and Controller together with a specially designed, multi-location gas sampling system tolerant of combustion product acids, high water content and fly ash.



Coal Combustion Gas Analyzer Data Screen

New Principal of Gas Measurement

The heart of the system is ARI's Laser Gas Analyzer Detector Module that uses the principles of Raman spectroscopy to simultaneously identify and quantify multiple gaseous compounds.

Replaces Older Technology Analyzers

- Electro-Chemical Cells
- Infrared Analyzers
- Zirconia Oxide Probes
- Gas Chromatographs
- Mass Spectrometers



ATMOSPHERE RECOVERY, INC.
Precision Management of Process Gases